

bygrayps

UPSC PRELIMS NEWS FOUNDATION BOOK JANUARY 2026

CRACK WITH DIRECT EXAM TEMPLATE



TEMPLATE INDEX

AGRICULTURE

- THE DEVDAR TREE
- PITAYA PITAHAYA
- STATEMENT
- ROOT (WILT) DISEASE

ART AND CULTURE

- KUKI-ZO GROUPS
- MYLARA LINGESHWARA TEMPLE
- THE KANCHIPURAM SILK SARI
- THE RANGANATHASWAMY TEMPLE
- THE KALBELIA
- MOLAPALAYAM
- HAMPI
- THE KOYA TRIBE
- ARASAVALLI SRI SURYA NARAYANA SWAMY DEVALAYAM
- YELLAMMA TEMPLE
- EKAMBARESWARAR TEMPLE
- THE COOUM RIVER
- MEENAKSHI TEMPLE

- **KUKI-ZO PEOPLE**
- **NARASIMHA I.**
- **WARANGAL FORT**
- **SAVITRIBAI PHULE**

BOTANY

- **STATEMENT**
- **HOYA NAGAENSIS**
- **A NATURAL HEATER HIDDEN IN LOTUS**
- **THE BLACK GRAM**
- **THE MUNG BEAN**
- **TAMARIND**
- **BAOBAB TREES**

BIOLOGY

- **VITAMIN D**
- **REASON WHY RICE IS WATER-INTENSIVE CROP**
- **HERPES ZOSTER**
- **NIPAH VIRUS**
- **SPINA BIFIDA**
- **VITAMIN B12**
- **BROAD-SPECTRUM PROTECTION VENOM**

- **HEPATITIS A**

ENVIRONMENT AND ECOLOGY

- **LEOPARD OF ULTRA-RARE COLOUR**
- **THE GARGANEY**
- **KANGAROOS**
- **THE WHALE SHARK (*RHINCODON TYPUS*)**
- **THE RED-EARED SLIDER**
- **SEAWEED**
- **AN ARTIFICIAL REEF (AR)**
- **TWO NEW RARE ANT FLY SPECIES**
- **WATER BIRDS NAMES IN NEWS**
- **PHENACOCCUS SOLENOPSIS**
- **DARWIN'S BARK SPIDER (*CAEROSTRIS DARWINI*)**
- **ODISHA'S SALTWATER CROCODILE POPULATION RISES TO 1,858**
- **A CIVET**
- **STINGLESS BEES**
- **ELEPHANT CALF**
- **SMOOTH COATED OTTER**

- **LEOPARD**

GEOGRAPHY

- **OSIRIS-REx**
- **HESARAGHATTA GRASSLANDS**
- **V. O. CHIDAMBARANAR PORT**
- **BANDAR ABBAS**
- **THE PORT OF EILAT**
- **COPPER PRODUCERS**
- **KOLLERU LAKE**
- **MAMALLAN RESERVOIR PROJECT**
- **SCARBOROUGH SHOAL**
- **BILIGIRI RANGANATHA SWAMY TEMPLE WILDLIFE SANCTUARY**
- **THE BEDDANURU RESERVE FOREST**
- **SUMATRA**
- **THE TADOBA ANDHARI TIGER RESERVE**
- **SEMBAKKAM LAKE**
- **CROATIA**
- **STATEMENT:**
- **STATEMENT**
- **PONNANI**
- **AL-OMAR FIELD**
- **STATEMENT**
- **THE MUNNERU-PALAIR LINK CANAL PROJECT**

- **RANN OF KUTCH**
- **BALARAM AMBAJI WILDLIFE SANCTUARY**
- **SATETEMENT**
- **THE PENNAGARAM RESERVE**
- **KOLLERU LAKE**
- **GLOBAL SURFACE TEMPERATURE**
- **MULLAPERIYAR DAM**
- **SATHYAMANGALAM TIGER RESERVE**
- **THE BENGALURU-VIJAYAWADA EXPRESSWAY**
- **STATEMENTS:**
- **INDIA'S WESTERN RIVERS**
- **STATEMENT**
- **METALLURGICAL COAL**
- **KUDREMUKH NATIONAL PARK**
- **MINAMITORISHIMA**
- **THE STATE-WISE RESERVES OF GRAPHITE**
- **BANNERGHATTA NATIONAL PARK**
- **PERIYAR NATIONAL PARK AND WILDLIFE SANCTUARY (PNP)**
- **SATHYAMANGALAM TIGER RESERVE**

BIOTECHNOLOGY

- **ICAR-CTCRI COMMERCIALISES PURPLE TARO VARIETY**

- **SUSTAINABLE AVIATION FUEL (SAF)**
- **SPECIFIC PATHOGEN FREE (SPF) SEEDS IN SHRIMP FARMING**
- **THE HPV VACCINE**
- **HERBICIDE TOLERANT BT (HTBT) COTTON**
- **SINGLE MOLECULE MOLECULAR INVERSION PROBES**
- **WHOLE EXOME SEQUENCING (WES)**
- **SPATIAL TRANSCRIPTOMICS (ST)**

TECHNOLOGY

- **ARTEMIS II**
- **GRAVITON DETECTOR**
- **OXYGEN-18 (O-18) ENRICHED WATER.**
- **KAGOME LATTICE HELIUM**
- **FIBER REINFORCED POLYMER**
- **STATEMENT:**
- **STATEMENT**
- **LONG RANGE ANTI-SHIP HYPERSONIC MISSILE (LR-ASHM)**
- **ICE CLOUD (INTEGRATED COMPUTING ENVIRONMENT)**
- **A NEW STATE OF MATTER THAT IS A HYBRID**

- ARTEMIS II
- OOGLE'S PROJECT SUNCATCHER
- SPACEFLIGHT AFFECTS
- TOPOLOGICAL MATERIALS
- THE PUBLIC FINANCIAL MANAGEMENT SYSTEM (PFMS)
- ARTEMIS II
- MAN PORTABLE ANTI-TANK GUIDED MISSILE (MPATGM)
- RAMJET-PROPELLED ARTILLERY SHELLS
- ARTIFICIAL SUN
- HYPERSONIC MISSILE PROGRAMME
- ORESHNIK (RUSSIAN)
- HYPER-VLA (VISION-LANGUAGE-ACTION)
- X-RAY PHOTOELECTRON SPECTROSCOPY (XPS)
- THE CAC/PAC JF-17 THUNDER
- INDIAN ARMY – SURYASTRA MULTI CALIBRE ROCKET LAUNCHER SYSTEM
- INS UDAYGIRI AND INS HIMGIRI
- THE TAIMUR
- PRALAY

ECONOMY

- **ECONOMIC SURVEY POINTS TO DECREASE IN AGRICULTURAL GROWTH IN 2025-26**
- **TURKEY WILL SEND A DRILLING VESSEL**
- **THE ECONOMIC SURVEY**
- **INDIA'S CENTRAL BANK DIGITAL CURRENCY (CBDC).**
- **THE SMALL INDUSTRIES DEVELOPMENT BANK OF INDIA (SIDBI)**
- **RISK-ADJUSTED RETURN ON CAPITAL (RAROC)**
- **SEBI PROPOSES ₹20,000 CRORE AS THRESHOLD FOR 'SIGNIFICANT' INDEX**
- **CHINA'S ECONOMY**
- **STATEMENT**
- **THE NITI AAYOG'S EXPORT PREPAREDNESS INDEX (EPI) 2024**
- **GREEN MUNICIPAL BOND**
- **INDIA APPLE IMPORTS**

POLITY

- **THE INDIAN WILDLIFE (PROTECTION) ACT, 1972**
- **THE NATIONAL LEGAL SERVICES AUTHORITY (NALSA)**

- THE DRAFT NATIONAL IN ELECTRICITY POLICY, 2026
- A SPECIAL AREA DEVELOPMENT AUTHORITY (SADA)
- SECTION 65B OF THE INDIAN EVIDENCE ACT, 1872
- THE COMPETITION ACT, 2002
- THE PRINCIPLES OF NATURAL JUSTICE
- THE DIRECTORATE OF ENFORCEMENT
- PREVENTION OF CRUELTY TO ANIMALS ACT, 1960

INTERNATIONAL RELATIONS

- SWITCH TO THE EURO
- ALIGN CHINA'S BELT AND ROAD INITIATIVE
- THE WORLD ECONOMIC FORUM (WEF)
- FRENCH GOVERNMENT SURVIVES SECOND NO-CONFIDENCE VOTE OVER 2026 BUDGET
- THE MONROE DOCTRINE
- WHAT IS PAX SILICA?
- THE TRANS-KARAKORAM TRACT
- THE SYRIAN CIVIL WAR
- INDIA, PAKISTAN EXCHANGE LISTS OF NUCLEAR INSTALLATIONS, PRISONERS

INTERNATIONAL BODIES:

- **THE INTERNATIONAL MONETARY FUND**
- **THE SOUTHERN TRANSITIONAL COUNCIL**
- **THE ANTARCTIC TREATY**
- **THE INTERNATIONAL STABILIZATION FORCE (ISF)**
- **STATEMENT**
- **THE BOARD OF PEACE**
- **ARTICLE 6 OF THE PARIS AGREEMENT**
- **THE INDUS WATERS TREATY (IWT)**
- **NORTH ATLANTIC TREATY ORGANIZATION**
- **THE INTERNATIONAL SEABED AUTHORITY (ISA)**
- **THE UNITED NATIONS FRAMEWORK CONVENTION ON CLIMATE CHANGE**
- **THE INTERGOVERNMENTAL PANEL ON CLIMATE CHANGE (IPCC)**

DEFENCE

- **MULTI-DAY AIR FORCE EXERCISE**
- **EXERCISE MILAN 2026**
- **SOUTH AFRICA-INITIATED MULTILATERAL NAVAL WARGAME**

- **PAKISTAN-UNITED STATES BILATERAL JOINT EXERCISE**
- **DESERT CYCLONE-II**

SPACE SCIENCE

- **WHY ARE SOME STARS BLUE, SOME WHITE, SOME RED?**
- **AURORA ACTIVITY**
- **SOLAR STORM**
- **A PROTOPLANETARY DISK**

NATIONAL BODIES

- **THE NATIONAL TIGER CONSERVATION AUTHORITY (NTCA)**
- **STATEMENTS**
- **CENTRAL SILK BOARD**

SCHEME

- **ELIMINATE MALARIA**
- **'NATIONAL PROGRAMME ON ADVANCED CHEMISTRY CELL (ACC) BATTERY STORAGE**

- **THE DANTEWADA "BAAL MITRA" PROGRAMME (EDUCATION FOCUSED - 2024/2025)**
- **THE KERALA CLIMATE RESILIENT AGRI-VALUE CHAIN MODERNISATION (KERA) PROGRAMME**
- **A "PRIME MINISTER RESEARCH CHAIR (PMRC)" SCHEME**
- **AYUSHMAN BHARAT PM-JAY MUKHMANTRI SEHAT BIMA YOJANA**

AWARDS

- **THE INDIRA GANDHI PRIZE**
- **UN SECRETARY GENERAL'S AWARD 2025**
- **MADHAV DHANANJAYA GADGIL**

REPORT

- **NATURAL DISASTERS CAUSED SIGNIFICANT LOSSES WORLDWIDE IN 2025.**
- **2025 UNICEF REPORT**
- **WORLD MALARIA REPORT 2025**
- **THE WORLD METEOROLOGICAL ORGANIZATION (WMO) HAS CONFIRMED THAT 2025 WAS ONE OF THE THREE WARMEST YEARS ON RECORD**
- **THE WORLD ECONOMIC FORUM'S GLOBAL RISKS REPORT 2026**
- **THE INTERNATIONAL LABOUR ORGANIZATION (ILO)'S EMPLOYMENT AND SOCIAL TRENDS 2026 REPORT**
- **WORLD HEALTH ORGANIZATION (WHO) WARNED**
- **THE WORLD ECONOMIC FORUM'S YOUTH PULSE 2026**

SPORTS

- **THE AUSTRALIAN OPEN**
- **THE INDIA OPEN**

AWARDS

- **STATEMENT**
- **THE PADMA AWARDS**

MISCELLANEOUS

- **INTERNATIONAL DAY OF LIGHT**
- **BIO-HAPPY DISTRICT**
- **STATE MICROORGANISM**
- **BENGALURU-KADAPA-VIJAYAWADA ECONOMIC
CORRIDOR OF NH-544G**



AGRICULTURE

THE DEVDAR TREE



- The Devdar tree (*Cedrus deodara*), or Himalayan Cedar, is a large, aromatic, evergreen conifer native to the Western Himalayas, reaching heights of 40–60 meters.
- It is a large evergreen coniferous tree reaching 40–50 metres
- The species natively occurs in East-Afghanistan, South Western Tibet, Western Nepal, Northern Pakistan, and North-Central India.
- ideal wood for constructing the well-known houseboats
- deodar wood was used extensively for construction of barracks, public buildings, bridges, canals and railway cars

PITAYA PITAHAYA



Pitaya pitahaya commonly known as **dragon fruit** (and **strawberry pear**) is the fruit of several cactus species indigenous to the region of southern Mexico and along the Pacific coasts of Guatemala, Costa Rica, and El Salvador.

STATEMENT



Redgram, also known as pigeon pea (*Cajanus cajan*), arhar, or tur, is a vital legume crop in South Asia.

ROOT (WILT) DISEASE

Root (wilt) disease (RWD) caused by phytoplasma is one of the most devastating diseases of coconut palms. The major symptoms of the disease in leaves are wilting and drooping and flaccidity;

ribbing, paling/yellowing and necrosis of leaflets are typical symptoms of foliar diseases.

ART AND CULTURE

KUKI-ZO GROUPS

The Kuki people, or Kuki-Zo people, are an ethnic group in the Northeastern Indian states of Manipur, Nagaland, Assam, Meghalaya, Tripura and Mizoram, as well as the neighbouring countries of Bangladesh and Myanmar.

MYLARA LINGESHWARA TEMPLE

Mylara Lingeshwara Temple is a Hindu temple dedicated to a form of the Hindu god Shiva in Mylara, located in, Karnataka, India, 2 km from the Tungabhadra River.

THE KANCHIPURAM SILK SARI

The **Kanchipuram silk sari**, also called **Kanjeevaram sari** is a type of silk sari made in the Kanchipuram region in Tamil Nadu, India.

It has been recognized as a Geographical indication by the Government of India in 2005–2006

THE RANGANATHASWAMY TEMPLE

The **Ranganathaswamy Temple** is a Hindu temple dedicated to Ranganatha (a form of Vishnu) and his consort Ranganayaki (a

form of Lakshmi). The temple is located in Srirangam, Tiruchirapalli, Tamil Nadu.

THE KALBELIA



The **Kalbelia** are a snake charming tribe from the Thar Desert in Rajasthan, India. Dance is an integral part of their culture and performed by men and women.

MOLAPALAYAM

Faunal remains unearthed by archaeologists from the **neolithic site at Molapalayam** near Coimbatore included bones of Indian rhinoceros, suggesting the presence of the pachyderm in the southern part of the country around 3,500 years ago.

HAMPI

Hampi is a city in the Vijayanagara district in the Indian state of Karnataka. Located along the Tungabhadra River.

THE KOYA TRIBE

The **Koya** are an Indian tribal community found in the states of Andhra Pradesh, Telangana, Chhattisgarh, and Odisha.

ARASAVALLI SRI SURYA NARAYANA SWAMY DEVALAYAM

Arasavalli Sri Surya Narayana Swamy Devalayam is a temple for Lord Surya, the solar deity, at Arasavalli in the Indian state of Andhra Pradesh.

YELLAMMA TEMPLE

Yellamma Temple, also known as **Renuka Temple**, is a temple of Goddess (Devi) Renuka. It is located in the Indian state of Karnataka. It is situated on a hilltop known earlier as Siddhachal Parvat .

The Yellamma Temple is built in the Chalukyan and Rashtrakuta style.

EKAMBARESWARAR TEMPLE

- **Ekambareswarar Temple (Ekambaranathar Temple) (Kacchi Eakamban Tirukkoyil)** is a Hindu temple dedicated to the god Shiva, located in the town of Kanchipuram in Tamil Nadu, India.
- It is one of the temples associated with the five elements, the *Pancha Bhoota Stalas*.

THE COOUM RIVER

- The Cooum River (or Koovam) is a short, historically significant river in Tamil Nadu, India

- The word *coovalan* denotes a person who is well versed in the science of ground water, well water and stagnant water.

MEENAKSHI TEMPLE

Meenakshi Temple, also known as **Meenakshi Sundareswarar Temple**, is a historic Hindu temple located on the southern bank of the Vaigai River in Madurai, Tamil Nadu, India. It is dedicated to Meenakshi, a form of Parvati, and her consort Sundareswarar (Shiva)

KUKI-ZO PEOPLE

The Kuki people, or Kuki-Zo people, are an ethnic group in the Northeastern Indian states of Manipur, Nagaland, Assam, Meghalaya, Tripura and Mizoram, as well as the neighbouring countries of Bangladesh and Myanmar.

NARASIMHA I

Narasimha I (r. 1152–1173 CE) was a ruler of the Hoysala Empire. His main legacy is his victory over his overlord Western Chalukya Empire King Tailapa III, which paved the way for the declaration of independence by his successor.

WARANGAL FORT



Warangal Fort is located in Warangal District, Telangana, India. It was the capital city of Kakatiya dynasty and the Musunuri Nayakas. The fort appears to have existed since at least the 12th century

SAVITRIBAI PHULE



Savitribai Phule (3 January 1831 – 10 March 1897) was an Indian educator, social reformer, and poet, widely regarded as the first female teacher of modern India. Along with her husband, Jyotiba Phule, she played a pivotal role in advancing women's rights and education in Maharashtra.

BOTANY

STATEMENT



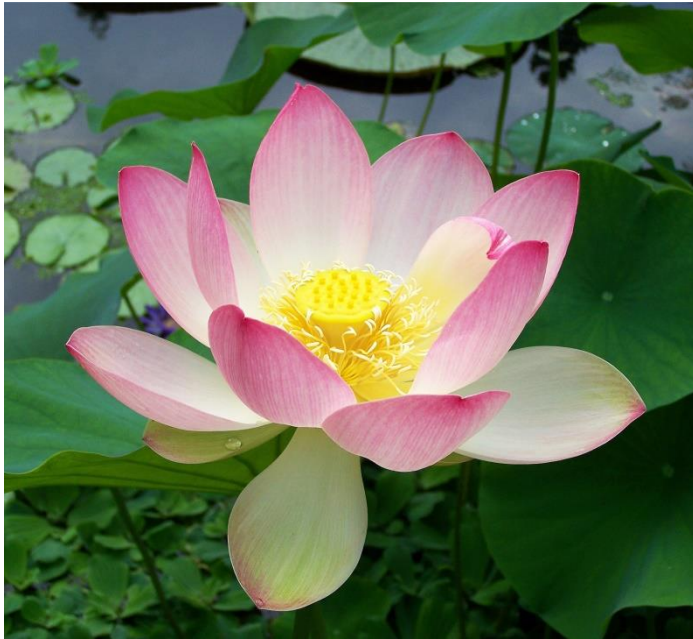
- Brazil declares superfood acai berry a national fruit
- The species is native to eastern Amazonia, especially in Brazil

HOYA NAGAENSIS



- *Hoya nagaensis*, the newly species identified in the North East by Nagaland University Researchers
- it as Critically Endangered.
- rare and endemic species

A NATURAL HEATER HIDDEN IN LOTUS



- When flowers bloom for three to four days, their internal temperature is around 30-35° C even as the surrounding temperature can go down to 10° C
- Reason:calcium heads to the mitochondria and signals them to shift into high gear. To produce heat, large amounts of stored starch and fat are used up
- Some plants of the Arum family also use thermogenesis to attract insects .

THE BLACK GRAM



- The **black gram** or **urad bean** (*Vigna mungo*) is a bean grown in South Asia. Like its relative the mung bean.
- In India the black gram is one of the important pulses grown in both kharif and rabi seasons

THE MUNG BEAN



The **mung bean** or **green gram** (*Vigna radiata*) is a plant species in the legume family. It is mainly cultivated in East, Southeast, and South Asia

TAMARIND



- **Tamarind (*Tamarindus indica*)** is a leguminous tree bearing edible fruit that is indigenous to tropical Africa with Sudan being a key part of its native range, and naturalized in Asia.
- The pulp is also used in traditional medicine and as a dye-

BAOBAB TREES



- *Adansonia digitata*, the African baobab, is native to the African continent and the southern Arabian Peninsula (Yemen, Oman).
- Baobab trees store water in their trunks and branches
- All baobabs are deciduous, losing their leaves in the dry season

BIOLOGY

VITAMIN D

Vitamin D is a group of structurally related, fat-soluble compounds responsible for increasing intestinal absorption of calcium and phosphate

REASON WHY RICE IS WATER-INTENSIVE CROP

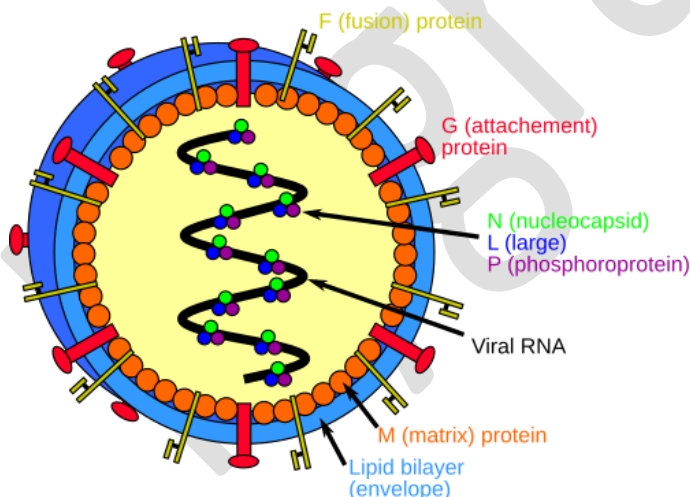
- **rice is a C3 plant, and C3 photosynthesis is less water-efficient in hot or dry conditions than C4 (e.g. maize).**
- In C3 plants, the main CO₂-fixing enzyme sometimes reacts with oxygen instead of CO₂. To keep photosynthesis going, **C3 leaves often need to keep stomata open enough to sustain internal CO₂ levels, which increases transpiration.**

HERPES ZOSTER



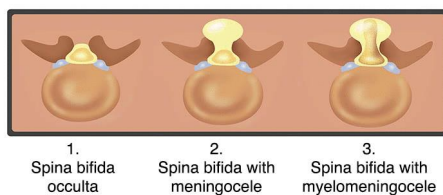
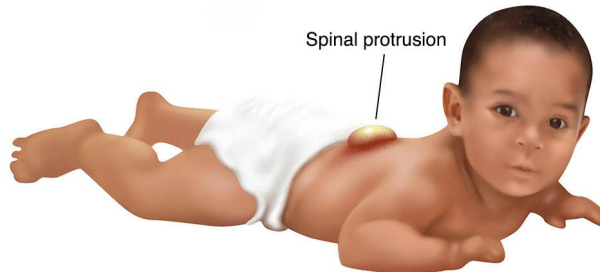
- Herpes zoster, also known as shingles, is a viral syndrome caused by reactivation of the varicella-zoster virus. After an episode of varicella (chicken-pox), the varicella-zoster virus remains dormant in the nervous system. Herpes zoster typically occurs in adults or elderly
- Recombinant zoster (shingles) vaccine, called Shingrix, can prevent shingles.

NIPAH VIRUS



Nipah virus infection is a zoonotic illness that is transmitted to people from animals, and can also be transmitted through contaminated food or directly from person-to-person. In infected people, it causes a range of illnesses from asymptomatic (subclinical) infection to acute respiratory illness and fatal encephalitis.

SPINA BIFIDA



- **Spina bifida** is a birth defect in which there is incomplete closing of the spine and the membranes around the spinal cord during early development in pregnancy
- Spina bifida is believed to be due to a combination of genetic and environmental factors
- condition can potentially be prevented by taking a folic acid tablet periconceptionally.

VITAMIN B12

Vitamin B12 is a water-soluble vitamin that is naturally present in some foods, added to others, and available as a dietary supplement and a prescription medication. Because vitamin B12 contains the mineral cobalt, compounds with vitamin B12 activity are collectively called cobalamins .

Vitamin B12 is required for the development, myelination, and function of the central nervous system; healthy red blood cell formation; and DNA synthesis.

BROAD-SPECTRUM PROTECTION VENOM

Broad-spectrum protection venom" generally refers to the goal of developing **universal antivenoms** capable of neutralizing a wide variety of venoms from numerous snake species, rather than just one specific type.

HEPATITIS A

Hepatitis A is a contagious liver infection caused by the Hepatitis A virus (HAV), spread through contaminated food, water, or close contact, leading to inflammation, fatigue, jaundice, and stomach pain.

ENVIRONMENT AND ECOLOGY

LEOPARD OF ULTRA-RARE COLOUR



- An ultra-rare leopard colour morph has been documented for the first time in Karnataka
- this exceptionally rare colour morph exhibits a pale reddish-pink coat, similar to the colour of sandalwood, with light-brown rosettes.
- Karnataka is one of the largest sandalwood producers in India.
- This leopard is consistent with conditions such as hypomelanism or erythrism, both of which are naturally occurring genetic traits identified in wild mammals.

THE GARGANEY



The **garganey** (*Spatula querquedula*) is a small dabbling duck. It breeds in much of Europe and across the Palearctic, but is

strictly migratory, with the entire population moving to Africa, India

KANGAROOS



- **Kangaroos** are marsupials
- marsupials, female kangaroos have a pouch called a marsupium in which joeys complete postnatal development.

THE WHALE SHARK (*RHINCODON TYPUS*)



The **whale shark** (*Rhincodon typus*) is a slow-moving, filter-feeding carpet shark and the largest known extant fish species

It is currently listed as an **Endangered** species on the IUCN Red List

THE RED-EARED SLIDER



The **red-eared slider** . Native to the southern United States and extreme northern Mexico, it is popular as a pet across the world, and is the most invasive chelonian.

SEAWEED

Seaweed, or **macroalgae**, refers to thousands of species of macroscopic, multicellular, marine algae. The term includes some types of Rhodophyta (red), Phaeophyta (brown) and Chlorophyta (green) macroalgae. Seaweed species such as kelps provide essential nursery habitat for fisheries and other marine species and thus protect food sources; other species, such as planktonic algae, play a vital role in capturing carbon and producing at least 50% of Earth's oxygen

AN ARTIFICIAL REEF (AR)



An **artificial reef (AR)** is a human-created freshwater or marine benthic structure. Typically built in areas with a generally featureless bottom to promote marine life, it may be intended to control erosion, protect coastal areas, block ship passage, block the use of trawling nets, support reef restoration, improve aquaculture.

TWO NEW RARE ANT FLY SPECIES



- The newly discovered species, *Metadon ghorpadei* {delhi} (left side image) and *Metadon reemeri* {tamilnadu} (right side image), belong to the sub family Microdontinae (Syrphidae).
- These flies are known for their unique association with ants, as their larvae live inside ant nest and feed on ant brood, a specialised behaviour called myrmecophily that makes them exceptionally rare and difficult to detect.

WATER BIRDS NAMES IN NEWS

grey-headed lapwing, citrine wagtail, the grey-headed lapwing

PHENACOCCUS SOLENOPSIS



Phenacoccus solenopsis, the cotton mealybug or solenopsis mealybug, is a species of mealybug in the family Pseudococcidae. Having originated in North America, it has spread to other parts of the world and become a major pest of cotton crops.

DARWIN'S BARK SPIDER (*CAEROSTRIS DARWINI*)



- Darwin's bark spider (*Caerostris darwini*) is an orb-weaver spider that produces the largest known orb webs.
- The spider was discovered in Madagascar in the Andasibe-Mantadia National Park in 2009.
- Its silk is the toughest biological material ever studied. Its tensile strength is 1.6 GPa.

ODISHA'S SALTWATER CROCODILE POPULATION RISES TO 1,858

- Odisha's estuarine crocodile population has increased by 32, reaching 1,858,

- Survey, across river systems in and around Bhitarkanika National Park and Wildlife Sanctuary, Gahirmatha Wildlife Sanctuary, the Mahanadi deltaic area, and the Devi river mouth area.

A CIVET



- A **civet** is a small, lean, mostly nocturnal mammal native to tropical Asia and Africa, especially the tropical forests.
- Civets are unusual among feliforms, and carnivora in general, in that they are omnivores or even herbivores.

STINGLESS BEES



- Bees native to the Peruvian part of the Amazon rainforest, who have no sting unlike their European counterparts, have become the first insects in the world to be granted legal rights.

- The insects now have the right to exist and flourish

ELEPHANT CALF

An elephant calf (baby elephant) is born large (around 3 ft tall, 264 lbs), stays extremely close to its mother and female relatives (aunties, sisters, matriarch), nurses for over two years.

SMOOTH COATED OTTER



- The smooth-coated otter (*Lutrogale perspicillata*) is a freshwater otter species from regions of South and Southwest Asia.
- It has been ranked as "vulnerable" on the IUCN Red List since 1996
- their presence is indicative of clean rivers that are free of pollutants

LEOPARD

- A leopard's gestation period is around 3 months (90 to 106 days),
- Listed as Vulnerable on the IUCN Red List,
- occurring widely in Africa and Asia
- The leopard is a solitary and territorial animal.
- They produce a number of vocalizations, including growls and snarls

GEOGRAPHY

OSIRIS-REx

- OSIRIS-REx samples from Bennu show the asteroid carries ribose, glucose, amino acids, and nucleobases; the discovery also includes nitrogen-rich polymers
- Bennu in an effort to answer fundamental questions about the formation of the early solar system and of life on the earth.
- To study the Bennu samples, NASA collaborated with scientists from the Japanese space agency because it had previously worked with samples from the asteroids **Itokawa** and the very similar **Ryugu**.

HESARAGHATTA GRASSLANDS

- **Hesaraghatta Grasslands** is a vast open grassland ecosystem located about **30 km northwest of Bengaluru, Karnataka**. It surrounds the historic **Hesaraghatta Lake**

- January 2025 ,the Karnataka Cabinet approved the declaration of Greater Hesaraghatta Grasslands Conservation Reserve (GHGCR)
- unique ecosystems that are characteristic of dry open areas where grasses form the predominant vegetation”

V. O. CHIDAMBARANAR PORT

V. O. Chidambaranar Port is a port in Thoothukudi, Tamil Nadu, and is one of the 13 major ports in India. It was declared to be a major port on 11 July 1974. It is the second largest port in Tamil Nadu and third largest container terminal in India.

BANDAR ABBAS

Bandar Abbas is a port city in the Central District of Bandar Abbas County, Hormozgan province, Iran

THE PORT OF EILAT

The **Port of Eilat** was the only Israeli port on the Red Sea

COPPER PRODUCERS

Chile is the world's largest copper producer, followed by Peru, Democratic Republic of the Congo (DRC), and China, with other major producers including the United States, Russia, Indonesia, Australia, and Mexico.

KOLLERU LAKE

Kolleru Lake is one of the largest freshwater lakes in India and forms the largest shallow freshwater lake in Asia .Ramsar designated wetland.the lake is located between the Krishna and Godavari river deltas.Kolleru Lake is located in the state of Andhra Pradesh.

MAMALLAN RESERVOIR PROJECT

Mamallan reservoir project ,The reservoir is proposed as Chennai's sixth drinking water source and the first freshwater reservoir

SCARBOROUGH SHOAL

- The atoll is a disputed territory claimed by the People's Republic of China, the Republic of China (Taiwan), and the Republic of the Philippines.
- located between Macclesfield Bank to the west and Luzon to the east.

BILIGIRI RANGANATHA SWAMY TEMPLE WILDLIFE SANCTUARY

- **Biligiri Ranganatha Swamy Temple Wildlife Sanctuary** or simply BRT Wildlife Sanctuary. It is a protected reserve under the Wildlife Protection Act of 1972.
- The site was declared a tiger reserve in January 2011
- **Biligirirangan Hills** (as referred to in biology and geology) is a hill range situated in Chamarajanagar District in south-western Karnataka, at its border with Tamil Nadu

THE BEDDANURU RESERVE FOREST

the Beddanuru Reserve Forest in Eluru district, Andhra Pradesh

SUMATRA



Sumatra is a large Indonesian island in western Indonesia, known for its rugged tropical terrain, diverse wildlife (orangutans, tigers, elephants), active volcanoes

THE TADoba ANDHARI TIGER RESERVE

The **Tadoba Andhari Tiger Reserve** is a protected area in Chandrapur district of Maharashtra state in India

Tadoba Andhari Tiger Reserve is part of the Central Deccan Plateau Dry Deciduous Forests,

SEMBAKKAM LAKE

Sembakkam Lake, located near Chennai, India, is a historic freshwater wetland currently undergoing restoration to mitigate pollution from untreated sewage and solid waste

CROATIA



Image: <https://www.countryreports.org/country/Croatia.htm>

Croatia, officially the **Republic of Croatia**, is a country in Central and Southeast Europe, on the coast of the Adriatic Sea.

STATEMENT:

“Venezuelan crude apart from being bottom-heavy, also has high viscosity and high acid number “

STATEMENT

Copenhagen is Capital of Denmark

PONNANI

Ponnani is a Non- Major Port under the control of Government of Kerala.

AL-OMAR FIELD

Al-Omar field is an oil field in Deir ez-Zor Governorate, Syria. It is located 10 kilometres (6.2 mi) north of Mayadin, east of the Euphrates river.

STATEMENT

CHILE DECLARES EMERGENCY DUE TO WILDFIRES

THE MUNNERU-PALAIR LINK CANAL PROJECT

The initiative aims to divert 50–60 TMC of surplus water from the Munneru River—which previously flowed into the sea—directly into the Palair reservoir through a 9.6 km gravity-based canal.

RANN OF KUTCH

- The Rann of Kutch is a large area of salt marshes located in the northwestern part of the Indian subcontinent, and spans the border between India and Pakistan.
- Rann of Kutch which is shallow wetland which submerges in water during the rainy season and becomes dry during other seasons

BALARAM AMBAJI WILDLIFE SANCTUARY

Balaram Ambaji Wildlife Sanctuary is located at Banaskantha, Gujarat, India and falls in the catchment area of

Banas and Sabarmati rivers, and is a part of the Khathiar-Gir dry deciduous forests' ecoregion.

The sanctuary borders Rajasthan and close to mount abu.

SATETEMENT

A magnitude 6.2 earthquake struck off the coast of Oregon

THE PENNAGARAM RESERVE

The Pennagaram Reserve refers to the forest area in the **Dharmapuri district of Tamil Nadu, India**, known for its rich natural habitat, including leopards and elephants

KOLLERU LAKE

Kolleru Lake is one of the largest freshwater lakes in India and forms the largest shallow freshwater lake in Asia.

Ramsar designated wetland the lake is located between the Krishna and Godavari river deltas. Kolleru Lake is located in the Eluru district in the state of Andhra Pradesh.

GLOBAL SURFACE TEMPERATURE

Global surface temperature (GST) is the average temperature of Earth's surface at a given time. It is a combination of sea surface temperature and the near-surface air temperature over land, weighted by their respective areas.

The global average and combined land and ocean surface temperature show a warming of 1.09 °C

MULLAPERIYAR DAM

Mullaperiyar Dam is a masonry gravity dam on the Periyar River of Idukki district of Indian state of Kerala.

SATHYAMANGALAM TIGER RESERVE

Sathyamangalam Tiger Reserve is a protected area and tiger reserve located along the area straddling both the Western Ghats and Eastern Ghats in the Erode district of the Indian state of Tamil Nadu.

The reserve is a significant ecosystem and a wildlife corridor in the Nilgiri Biosphere Reserve

THE BENGALURU-VIJAYAWADA EXPRESSWAY

The Bengaluru-Vijayawada Expressway, classified as **NH-544G**, is an under-construction 518 km (322 mi)-long, six-lane access-controlled expressway between the cities of Bengaluru and Vijayawada, via Kadapa.

The expressway will have three sections of brownfield and greenfield sections.

STATEMENTS:

Wildfires in **south Argentina** rip through nearly 12,000 hectares of forest

INDIA'S WESTERN RIVERS

India's western rivers, including major ones like the Narmada, Tapi (Tapti), Sabarmati, and Mahi

STATEMENT

In Australia, the southeastern state of Victoria declared a state of disaster as massive bushfires continued to rage across multiple regions.

METALLURGICAL COAL

Metallurgical coal or coking coal is a grade of coal that can be used to produce good-quality coke. Coke is an essential fuel and reactant in the blast furnace process for primary steelmaking.

KUDREMUKH NATIONAL PARK

- **Kudremukh National Park** is a protected area in Chikmagalur and Dakshina Kannada districts of Indian state of Karnataka.
- It was primarily an iron ore mining town.
- The Tunga River and Bhadra River flow freely through the parklands.

MINAMITORISHIMA



- Minamitorishima sometimes Minami-Tori-shima or Minami-Torishima, also known as Marcus Island, is an isolated Japanese coral atoll in the northwestern Pacific Ocean,
- A species in the gecko family Gekkonidae, *Perochirus ateles*, inhabits the island.
- **Japan to test deep sea rare earth mining**

THE STATE-WISE RESERVES OF GRAPHITE

the State-wise reserves of Graphite are Andhra Pradesh, Bihar , Gujarat ,Karnataka, Kerala, Madhya Pradesh , Maharashtra, Orissa, Rajasthan and Tamil Nadu tonnes.

BANNERGHATTA NATIONAL PARK

Bannerghatta National Park is a national park in India, located In Bengaluru and Ramanagara District, Karnataka. declared as a national park in 1974.

The park has a hilly terrain of granite sheets.

PERIYAR NATIONAL PARK AND WILDLIFE SANCTUARY (PNP)

Periyar National Park and Wildlife Sanctuary (PNP) is a protected area located in the districts of Idukki and Pathanamthitta in Kerala, India. It is a renowned elephant and tiger reserve

Periyar National Park lies in the middle of the Cardamom Hills

SATHYAMANGALAM TIGER RESERVE

Sathyamangalam Tiger Reserve is a protected area and tiger reserve located along the area straddling both **the Western Ghats and Eastern Ghats** in the Erode district of the Indian state of Tamil Nadu.

The reserve is a significant ecosystem and a wildlife corridor in the Nilgiri Biosphere Reserve between the Western Ghats and the Eastern Ghats .

BIOTECHNOLOGY

ICAR-CTCRI COMMERCIALISES PURPLE TARO VARIETY

The ICAR-Central Tuber Crops Research Institute (CTCRI) has commercialised a purple taro variety which is characterised by a high anthocyanin content.

SUSTAINABLE AVIATION FUEL (SAF)

Sustainable aviation fuel (SAF) is an alternative fuel made from non-petroleum feedstocks that reduces air pollution from air transportation. SAF can be blended at different levels with limits between 10% and 50%, depending on the feedstock and how the fuel is produced

FEEDSTOCKS

Fischer-Tropsch (FT) Synthetic Paraffinic Kerosene (SPK) :uses Municipal solid waste, agricultural and forest wastes, energy crops.

SPECIFIC PATHOGEN FREE (SPF) SEEDS IN SHRIMP FARMING

Litopenaeus vannamei is highly susceptible to a number of viral pathogens. Certain viral pathogens of shrimp, notably White Spot Syndrome Virus (WSSV) and Infectious Hypodermal and Hematopoietic Necrosis Virus (IHHNV), are transmitted from broodstock to postlarvae that are then stocked with the infection, increasing the likelihood of a serious profit-limiting disease outbreak. In order to eliminate the presence, the virus in the seed, Specific Pathogen Free (SPF) stock has been developed by producing a number of generations in highly biosecure facility with continued surveillance of pathogen presence.

THE HPV VACCINE

- Human papillomavirus, also called HPV, is spread by sexual activity.
- The HPV vaccine protects against genital warts and most cases of cervical cancer.

HERBICIDE TOLERANT BT (HTBT) COTTON

the use of banned Herbicide Tolerant Bt (HTBT) cotton seeds and excessive application of glyphosate weed killer, pose serious risks to agriculture, soil health and human safety

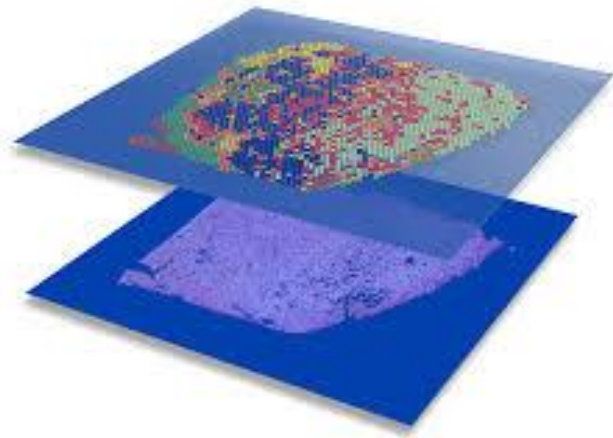
SINGLE MOLECULE MOLECULAR INVERSION PROBES

it remains challenging to reliably detect mutations that are present at a low relative abundance in a given DNA sample. Here we describe smMIP, an assay that combines single molecule tagging with multiplex targeted capture to enable practical and highly sensitive detection of low-frequency or subclonal variation.

WHOLE EXOME SEQUENCING (WES)

- Whole Exome Sequencing (WES) is a powerful genetic test that sequences all the protein-coding regions (exons) of a person's DNA, making it highly efficient for finding disease-causing mutations
- technologies can examine infertility-related genes in far greater detail.

SPATIAL TRANSCRIPTOMICS (ST)



Spatial transcriptomics (ST) is a revolutionary technology that maps gene expression directly within intact tissues, revealing how cells are organized, interact, and function in specific locations, bridging the gap left by traditional methods like single-cell RNA sequencing (scRNA-seq) that lose spatial context

TECHNOLOGY

ARTEMIS II

Artemis II is the first crewed mission of NASA's Artemis programme. It will be the first time humans will travel to the vicinity of the moon since 1972. The 10-day flight will test the Space Launch System (SLS) rocket and the Orion spacecraft to ensure all life-support and navigation systems are safe for future lunar missions.

GRAVITON DETECTOR

Researchers at the Stevens Institute of Technology and Yale University are developing an experimental detector that uses a superfluid helium resonator to detect individual gravitons—the

hypothetical, infinitesimal quantum particles that carry the force of gravity

OXYGEN-18 (O-18) ENRICHED WATER.

The **Heavy Water Board (HWB)**, a constituent unit of the **Department of Atomic Energy (DAE), Government of India**, has successfully developed the capability to produce **Oxygen-18 (O-18) enriched water**.

A **100 kg per year Oxygen-18 Enriched Water production facility** has been set up at **Heavy Water Plant (HWP), Manuguru, Telangana**. This is **India's first facility of its kind**, marking an important step towards self-reliance in this critical material.

the facility will not only meet **domestic medical requirements** but also has the potential to **cater to global demand** for Oxygen-18 enriched water.

KAGOME LATTICE HELIUM

"Kagome lattice helium" refers to an innovative, non-chemical sensor technology designed to detect helium leaks using sound waves trapped in a Kagome-patterned lattice

FIBER REINFORCED POLYMER



Fiber Reinforced Polymer, commonly known as FRP or GRP, is a composite material made up of a polymer matrix reinforced with fibers. The fibers in FRP are made of glass which add strength and stiffness to the polymer matrix. This results in a material that is lightweight, yet strong and durable, with excellent corrosion resistance and mechanical properties. Due to these properties, FRP has become a popular choice in a wide range of industries, including construction, transportation, aerospace, and marine

STATEMENT:

Government aims to make 3-nanometre chips by 2032; achieve self-reliance in 75% tech categories in 4 years

STATEMENT

Semaglutide injection is used to treat type 2 diabetes

LONG RANGE ANTI-SHIP HYPERSONIC MISSILE (LR-ASHM)



- This weapon system is designed to meet the coastal battery requirements of the Indian Navy. The LR-ASHM is a Hypersonic Glide Missile capable of engaging static and moving targets and is designed to carry various payloads. The missile is a first-of-its-kind with indigenous avionics systems and high accuracy sensor packages.
- This hypersonic missile follows a quasi-ballistic trajectory with hypersonic speeds starting at Mach 10 and maintaining average Mach 5.0 with multiple skips.
- The LR-ASHM is configured with a two stage solid propulsion rocket motor system

ICE CLOUD (INTEGRATED COMPUTING ENVIRONMENT)

ICE Cloud (Integrated Computing Environment) is an indigenous, C-DAC-developed, and DBT-funded cloud platform designed for life sciences and bioinformatics research in India. It provides high-performance computing, storage, and specialized, pre-installed tools for genome analysis, drug discovery, and data visualization.

A NEW STATE OF MATTER THAT IS A HYBRID

The boundary between a substance's liquid and solid phases may not be as clear-cut as previously believed. A new state of matter that is a hybrid of both has emerged in research by scientists at the University of Nottingham, UK and the University of Ulm, Germany, and they say the discovery could have applications in catalysis and other thermally-activated processes.

ARTEMIS II

Four astronauts will venture around the Moon on Artemis II, the first crewed mission on NASA's path to establishing a long-term presence at the Moon for science and exploration through Artemis. The 10-day flight will help confirm systems and hardware needed for early human lunar exploration missions.

GOOGLE'S PROJECT SUNCATCHER

Google's Project Suncatcher is a major research initiative to build solar-powered AI data centers in space, using satellites with custom Tensor Processing Units (TPUs) and laser links to create an orbiting computing network, aiming to reduce Earth's energy/water use for cooling

SPACEFLIGHT AFFECTS

- the space environment can significantly altered the cells' gene expression.
- genes related to heart function, the nervous system, and the senses of vision and smell can became overactive.
- genes that repaired DNA and helped cells divide worked less effectively, signalling long-term risks.

TOPOLOGICAL MATERIALS

The Nobel Prize in physics 2016 has been awarded “for theoretical discoveries of topological phase transition and topological phases of matter”. Topology is a geometric property that cannot be changed by any continuous deformations.

THE PUBLIC FINANCIAL MANAGEMENT SYSTEM (PFMS)

PFMS is facilitating Payments and Exchequer Control, Direct Benefit Transfer (DBT), Monitoring fund flow mechanism, Accounting of Receipts (Tax and Non Tax), Compilation of Accounts and Preparation of Fiscal Report, and Dissemination of Information. It has established interface with financial management system of states, banks and other external systems.

ARTEMIS II

Four astronauts will venture around the Moon on Artemis II, the first crewed mission on NASA's path to establishing a long-term presence at the Moon for science and exploration through Artemis. The 10-day flight will help confirm systems and hardware needed for early human lunar exploration missions

MAN PORTABLE ANTI-TANK GUIDED MISSILE (MPATGM)

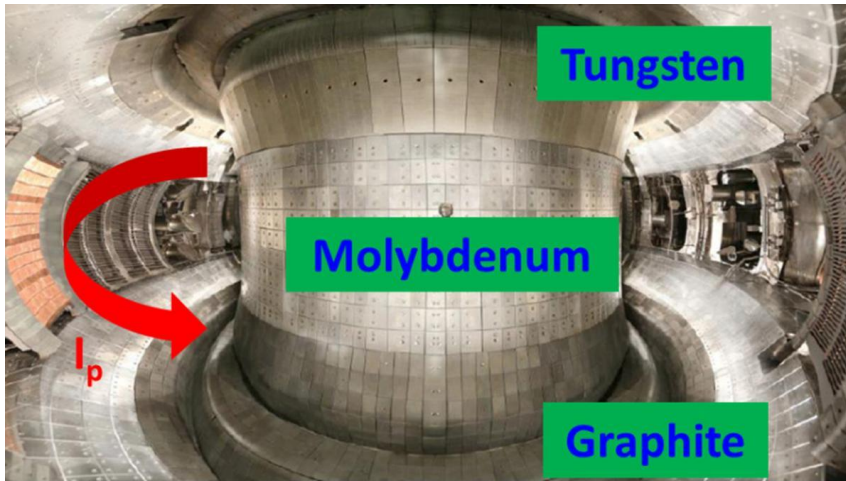
The Defence Research and Development Organisation (DRDO) on Sunday (January 11, 2026) successfully flight-tested the indigenously developed third-generation fire-and-forget Man Portable Anti-Tank Guided Missile (MPATGM)

RAMJET-PROPELLED ARTILLERY SHELLS

the Indian Institute of Technology (IIT), Madras, have developed and tested ramjet-propelled artillery shells that are capable of enhancing the range of gun fire by about 50% without sacrificing its lethality.

A ramjet engine uses high speed to compress incoming air, mix it with fuel, and generate thrust without moving parts like rotating turbines.

ARTIFICIAL SUN



Researchers working on China's 'artificial sun' have reported breaking a long-accepted threshold that has limited the operation of nuclear fusion reactors for decades.

China's Experimental Advanced Superconducting Tokamak (EAST) is a nuclear fusion research reactor in Hefei. Researchers hope that it will one day produce clean, nearly limitless energy by replicating the fusion processes that power the Sun.

HYPERSONIC MISSILE PROGRAMME

Defence Research and Development Organisation (DRDO), has achieved a milestone in India's **hypersonic missile programme** with the successful long-duration ground test of an actively-cooled scramjet full-scale combustor.

ORESHNIK (RUSSIAN)

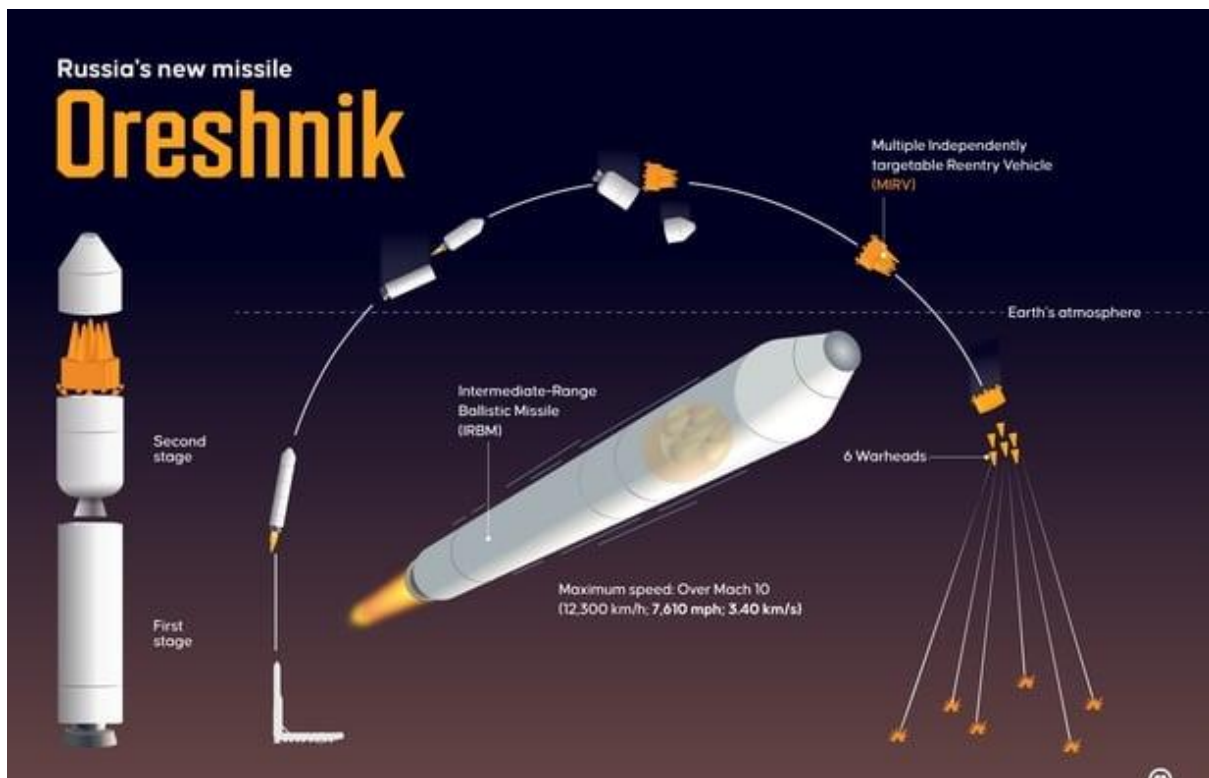


Image: <https://www.rte.ie/news>

Oreshnik (Russian:) is a Russian intermediate-range ballistic missile (IRBM) characterized by its reported speed exceeding Mach 10

HYPER-VLA (VISION-LANGUAGE-ACTION)

INFIFORCE showcased its proprietary Causal World Model and Hyper-VLA (Vision-Language-Action) Foundation Model, designed to bridge the gap between virtual intelligence and real-world execution. Together, the technologies create a unified “Perception–Cognition–Decision–Execution” framework, enabling robots to understand physical laws, predict outcomes, reduce hallucinations, and operate autonomously with higher safety and reliability.

X-RAY PHOTOELECTRON SPECTROSCOPY (XPS)

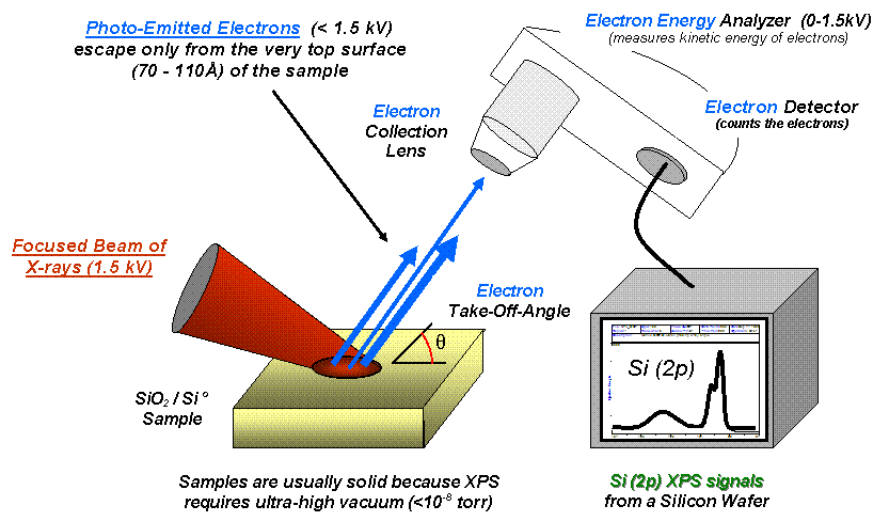


Image: <https://en.wikipedia.org>

X-ray Photoelectron Spectroscopy (XPS) is a powerful surface-sensitive technique that uses X-rays to eject electrons from a material, measuring their kinetic energy to determine elemental composition, chemical states, and electronic structure within the top few nanometers of a surface

THE CAC/PAC JF-17 THUNDER



The **CAC/PAC JF-17 Thunder** or **FC-1 Xiaolong** is a fourth-generation, single-engine, lightweight, multirole combat aircraft developed jointly by the Chengdu Aircraft Corporation (CAC) of China and the Pakistan Aeronautical Complex (PAC).

INDIAN ARMY – SURYASTRA MULTI CALIBRE ROCKET LAUNCHER SYSTEM



Indian Army – *Suryastra* multi calibre rocket launcher system was ordered at a cost of ₹292.69 crore (US\$35 million) from NIBE Limited. Ammunition include rockets with a maximum range of 150 km and 300 km and loitering munition with 100 km range. To be manufactured in India under technology transfer.

INS UDAYGIRI AND INS HIMGIRI

INS Udaygiri and INS Himgiri - commissioned into the Indian Navy, Visakhapatnam on August 26, 2025. It was for the first time that two frontline surface combatants indigenously constructed by two different shipyards - Mazagon Dock Shipbuilders Limited (MDL).

THE TAIMUR



The Taimur also known as Taimoor) is a next-generation low-observable high-precision air-launched cruise missile (ALCM) developed by the Air Weapons Complex of Pakistan.

PRALAY

Pralay is a canisterised surface-to-surface, short-range, tactical ballistic missile, developed by the Defence Research and Development Organisation. It uses a combination of technologies created for the Prahaar tactical missile, and the exoatmospheric interceptor Prithvi Defence Vehicle.

Pralay will become a part of the Integrated Rocket Force along with Nirbhay, BrahMos, and Pinaka.

ECONOMY

DECREASE IN AGRICULTURAL GROWTH IN 2025-26

- The Economic Survey, has noted that the average annual growth rate in the agriculture and allied sector over the last five years has been around 4.4% at constant prices.
- The decadal growth of 4.45% (2015-16 to 2024-25), primarily resulted from the strong performance in livestock and fishing and aquaculture, the crop sector

TURKEY WILL SEND A DRILLING VESSEL

- Turkey will send a drilling vessel to Somalia in to carry out the country's first deepwater exploration project abroad
- the operation with the Cagri Bey vessel will focus on offshore areas in Somali waters
- In 2024, Turkey signed an energy exploration deal with Somalia. It has been seeking to diversify its energy sources and reduce reliance on imports, investing in exploration at home and overseas.

THE ECONOMIC SURVEY

The Economic Survey, tabled in Parliament on Thursday (January 29, 2026), has noted that the average annual growth rate in the agriculture and allied sector over the last five years has been around 4.4% at constant prices. However, in the second quarter of 2025-26, the agriculture sector registered a growth of 3.5%, almost one percentage point less than the average.

INDIA'S CENTRAL BANK DIGITAL CURRENCY (CBDC).

What is Digital Rupee?

Digital Rupee or e₹, is India's Central Bank Digital Currency (CBDC). It is the digital form of India's physical currency, the Rupee (₹). e₹ is issued by the Reserve Bank of India (RBI) in digital form and offers features similar to physical cash like convenience of use, guarantee of RBI, finality of settlement, etc. e₹ is stored in the user's digital wallet and can be used to receive / send money, and / or make payment for transactions, just like any physical ₹ note.

THE SMALL INDUSTRIES DEVELOPMENT BANK OF INDIA (SIDBI)

- The Union Cabinet on Wednesday January 21, 2026 approved an equity infusion of ₹5,000 crore into the Small Industries Development Bank of India (SIDBI) to expand the credit available to micro, small and medium enterprises (MSMEs).
- The infusion will be made by the Department of Financial Services (DFS) in three tranches

BACKGROUND:

- the risk-weighted assets on SIDBI's balance sheet are expected to rise significantly. This increase will necessitate higher capital to sustain **the same level of Capital to Risk-weighted Assets Ratio (CRAR)**. The digital and digitally-enabled collateral-free credit products being developed by SIDBI, aimed at boosting credit flow.

RISK-ADJUSTED RETURN ON CAPITAL (RAROC)

Risk-adjusted return on capital (RAROC) is a risk-based profitability measurement framework for analysing risk-adjusted financial performance and providing a consistent view of profitability across businesses.

SEBI PROPOSES ₹20,000 CRORE AS THRESHOLD FOR 'SIGNIFICANT' INDEX

- The Securities and Exchange Board of India (SEBI) proposed a ₹20,000 crore threshold to identify “significant” indices relating to the Index Providers’ Regulations, 2024.
- The significant indices under the regulation were defined as the indices administered by an index provider, which are tracked or benchmarked by domestic mutual fund schemes with the cumulative assets under management exceeding the limits as may be specified from time to time.
- **The proposed regulation does not apply to indices regulated by RBI**

CHINA'S ECONOMY

China's economy expanded at a 5 per cent annual pace in 2025, buoyed by strong exports.

STATEMENT

China's population fell for a fourth consecutive year in 2025 as the birthrate plunged to a record low,

THE NITI AAYOG'S EXPORT PREPAREDNESS INDEX (EPI) 2024

- Kerala has improved its ranking to 11 among all States in the NITI Aayog's Export Preparedness Index (EPI) 2024 rankings.
- Kerala's export profile spans sectors including petroleum products, spices, marine products, coir and information technology. Petroleum products account for nearly 48% of the State's total merchandise exports.
- Reasons for growth:
- Kerala as strong West Asian linkages supported by its large diaspora.
- The report notes that high rankings in Ease of Doing Business, backed by digital platforms like K-SWIFT and K-CIS.

GREEN MUNICIPAL BOND

A green municipal bond is a fixed-income financial instrument for raising capital through the debt capital market. As with any other bond, the bond issuer raises a fixed amount of capital from investors over an established period of time (the "maturity"), repays the capital (the "principal") when the bond matures, and pays an agreed-upon amount of interest ("coupons") during that time.

The key difference between a green bond and a regular bond is that the former is explicitly labelled as "green" by the issuer, and a commitment is made to use the proceeds of the green bond to exclusively finance or re-finance projects with an environmental benefit.

INDIA APPLE IMPORTS

India imports significant quantities of fresh apples, primarily from countries like Turkey, Iran, Italy, South Africa, and Afghanistan, to meet high consumer demand.

POLITY

THE INDIAN WILDLIFE (PROTECTION) ACT, 1972

Under the Indian **Wildlife (Protection) Act, 1972**, Section 11(2) explicitly states that the killing or wounding in good faith of any wild animal in defense of oneself or any other person shall not be an offense.

THE NATIONAL LEGAL SERVICES AUTHORITY (NALSA)

The National Legal Services Authority (NALSA) has been constituted under the Legal Services Authorities Act, 1987 to provide free Legal Services to the weaker sections of the society and to organize Lok Adalats for amicable settlement of disputes.

THE DRAFT NATIONAL IN ELECTRICITY POLICY, 2026

the Draft National In Electricity Policy, 2026, The draft policy outlines the strategic framework for ensuring reliable, affordable, and sustainable electricity supply, promoting competition, enhancing grid resilience, and delivering consumer-centric services in line with the vision of Viksit Bharat @ 2047

A SPECIAL AREA DEVELOPMENT AUTHORITY (SADA)

A Special Area Development Authority (SADA) is a government-constituted body designed to ensure planned development, infrastructure growth, and environmental protection in specific areas of high ecological, historical, or tourism importance

SECTION 65B OF THE INDIAN EVIDENCE ACT, 1872

Section 65B of the Indian Evidence Act, 1872, governs the admissibility of electronic records (like computer printouts, CDs, emails, WhatsApp messages) as evidence in Indian courts, treating them as documents if specific conditions are met, primarily requiring a **Section 65B Certificate** that authenticates the record's origin

THE COMPETITION ACT, 2002

The Competition Act, 2002, as amended by the Competition (Amendment) Act, 2007, follows the philosophy of modern competition laws. The Act prohibits anti-competitive agreements, abuse of dominant position by enterprises and regulates combinations (acquisition, acquiring of control and M&A), which causes or likely to cause an appreciable adverse effect on competition within India.

THE PRINCIPLES OF NATURAL JUSTICE

The principles of natural justice, or *kaanoon* (law) of fairness, are non-codified, essential procedural rules ensuring fair decision-making by authorities. The two core pillars are *Nemo Judex in Causa Sua* (rule against bias) and *Audi Alteram Partem* (right to a

fair hearing), which protect individuals from arbitrary administrative or judicial actions.

THE DIRECTORATE OF ENFORCEMENT

The Directorate of Enforcement is a multi-disciplinary organization mandated with investigation of offence of money laundering and violations of foreign exchange laws. The statutory functions of the Directorate include enforcement of following Acts:

- The Prevention of Money Laundering Act, 2002 (PMLA):
- The Foreign Exchange Management Act, 1999 (FEMA):
- The Fugitive Economic Offenders Act, 2018 (FEOA)

PREVENTION OF CRUELTY TO ANIMALS ACT, 1960

The prevention of cruelty to animals is a state subject.

INTERNATIONAL RELATIONS

SWITCH TO THE EURO

Bulgaria became the 21st country to switch to the euro as it entered the New Year on Thursday (January 1, 2026), a milestone met with both cheers and fears, nearly 20 years after the Balkan nation joined the European Union (EU).

ALIGN CHINA'S BELT AND ROAD INITIATIVE

A 2024 strategic partnership to align China's Belt and Road Initiative with Brazil's plans to boost farming, infrastructure, and

the energy transition exemplifies solidarity and cooperation among Global South countries.

THE WORLD ECONOMIC FORUM (WEF)

The World Economic Forum (WEF) has decided to establish five new Centres for the Fourth Industrial Revolution, including one in India's Andhra Pradesh.

The Fourth Industrial Revolution Network is a platform for multi-stakeholder collaboration, bringing together public and private sectors to help ensure emerging technologies deliver benefits for society while minimising risks.

FRENCH GOVERNMENT SURVIVES SECOND NO-CONFIDENCE VOTE OVER 2026 BUDGET

- The French government survived a second vote of no-confidence in Parliament on Friday (January 23, 2026)
- The motion, filed by the far-right National Rally (RN) party, was backed by 142 members of Parliament. 288 votes were needed for the motion to pass.
- An earlier no-confidence motion filed by the hard left on the same matter had also failed.

THE MONROE DOCTRINE

Context: The Monroe Doctrine, alternatively styled as the Trump Corollary to the Monroe Doctrine.

The Monroe Doctrine is a United States foreign policy position that opposes any foreign interference in the Western Hemisphere. Originally concerning European colonialism, it holds that any intervention in the political affairs of the Americas by foreign powers is a potentially hostile act against the United States. The doctrine was central to American grand strategy in the 20th century

WHAT IS PAX SILICA?

- pax silica is a united states-led international initiative the department of state's flagship effort on ai and supply chain security, advancing new economic security consensus among allies and trusted partners.
- On December 11, 2025, the US Department of State announced the inaugural Pax Silica Summit
- the current signatory countries on the declaration:
 -  United States
 -  Australia
 -  Japan
 -  South Korea
 -  United Kingdom
 -  Singapore
 -  Israel
 -  Netherlands (joined December 17, 2025)
 -  United Arab Emirates (joined January 14, 2026)
 -  Qatar (joined January 2026)

THE TRANS-KARAKORAM TRACT



The **Trans-Karakoram Tract** Chinese also known as the **Shaksgam Tract** is an area of approximately 5,200 km² (2,000 sq mi) north of the Karakoram watershed, including the Shaksgam Valley.

Originally, the Indian government claimed sovereignty over the Shaksgam Tract following the accession of Jammu and Kashmir to India in 1947. However, Pakistan took control of the region during the First India–Pakistan War and subsequently ceded it to China in 1963 through the Sino-Pakistan Agreement, and a border based on actual ground positions was recognized as the international border by China and Pakistan. The Shaksgam Tract, along with the entire Kashmir region, is claimed by India.

THE SYRIAN CIVIL WAR

context:syria conflict: ceasefire declared in aleppo amid ongoing tensions

The **Syrian civil war** was an armed conflict that began with the Syrian revolution in March 2011, when popular discontent with the Ba'athist regime ruled by Bashar al-Assad triggered large-scale protests and pro-democracy rallies across Syria, as part of the wider Arab Spring. The Assad regime responded to the protests with lethal force, which led to a series of defections, the

emergence of armed opposition groups, and the civilian uprising descending into a civil war.

INDIA, PAKISTAN EXCHANGE LISTS OF NUCLEAR INSTALLATIONS, PRISONERS

- two countries are obligated to exchange the list of prisoners twice a year, at the start of January and July.
- The agreement on nuclear installations was signed on December 31, 1988, and came into force on January 27 1991.

INTERNATIONAL BODIES:

THE INTERNATIONAL MONETARY FUND

The International Monetary Fund (IMF) works to achieve sustainable growth and prosperity for all of its 191 member countries. It does so by supporting economic policies that promote financial stability and monetary cooperation

The International Monetary Fund (IMF) recently released its World Economic Outlook

THE SOUTHERN TRANSITIONAL COUNCIL

The **Southern Transitional Council** is a political and military organization in Yemen that formed in 2017 and held territory until January 2026

THE ANTARCTIC TREATY

The Antarctic Treaty was signed in Washington on 1 December 1959 by the twelve countries whose scientists had been active in and around Antarctica during the International Geophysical Year (IGY) of 1957-58. It entered into force in 1961 and has since been acceded to by many other nations. The total number of Parties to the Treaty is now 58.

Some important provisions of the Treaty:

- Antarctica shall be used for peaceful purposes only

Art. I

- Freedom of scientific investigation in Antarctica and cooperation toward that end... shall continue

Art. II

- Scientific observations and results from Antarctica shall be exchanged and made freely available

Art. III

THE INTERNATIONAL STABILIZATION FORCE (ISF)

The International Stabilization Force (ISF) is a UN-mandated, multinational security force authorized in November 2025 via

Resolution 2803 to oversee the post-conflict transition in the Gaza Strip

STATEMENT

- Wings India, Asia's largest civil aviation exhibition, will be held at Begumpet Airport.
- Russia's United Aircraft Corporation (UAC) of the Rosetec State Corporation will present its newest regional aircraft, the Ilyushin IL-114-300

THE BOARD OF PEACE

- The Board of Peace is an United States-led intergovernmental organization . The Board was proposed by U.S. president Donald Trump in September 2025
- United Nations Security Council Resolution 2803, drafted by the United States and adopted in November 2025, the board is mandated to support the administration, reconstruction and economic recovery of the Gaza Strip in the aftermath of the Gaza War.
- Spain will not join Trump's Board of Peace:cited consistency with commitment to international law, the U.N. and multilateralism as the main reasons it was declining to participate
- Britain will not take part in Thursday's (January 22, 2026) signing ceremony for U.S. President Donald Trump's "Board of Peace"
- China and India are yet to give any official confirmations regarding their participation. Norway rejected the proposal to join the peace board,
- Who accepted?

- The United Arab Emirates, Argentina, Kazakhstan, Uzbekistan, Morocco, Israel and Pakistan, Canada

ARTICLE 6 OF THE PARIS AGREEMENT

Article 6, countries are able to transfer carbon credits earned from the reduction of greenhouse gas emissions to help one or more countries meet their climate targets.

There are three tools which countries can draw upon under Article 6, one of which is the Paris Agreement Crediting Mechanism (PACM) - the UN's new high-integrity carbon crediting mechanism.

For example, through this mechanism a company in one country can reduce emissions in that country and have those reductions credited, so that it can sell them to another company in another country.

THE INDUS WATERS TREATY (IWT)

The Indus Waters Treaty (IWT) is a 1960 agreement between India and Pakistan, brokered by the World Bank, to manage water sharing from the Indus River system, allocating the Eastern Rivers (Ravi, Beas, Sutlej) to India and Western Rivers (Indus, Jhelum, Chenab) primarily to Pakistan, with provisions for data exchange and a multi-tiered dispute resolution mechanism.

NORTH ATLANTIC TREATY ORGANIZATION

NATO is a political and military alliance of countries from Europe and North America. Its members are committed to protecting each other from any threat.

THE INTERNATIONAL SEABED AUTHORITY (ISA)

- The International Seabed Authority (ISA) is an autonomous international organization established under the 1982 **United Nations Convention on the Law of the Sea** (UNCLOS) and the **1994 Agreement relating to the Implementation of Part XI of the United Nations Convention on the Law of the Sea** (1994 Agreement).
- ISA has the mandate to ensure the effective protection of the marine environment from harmful effects that may arise from deep-seabed-related activities.

THE UNITED NATIONS FRAMEWORK CONVENTION ON CLIMATE CHANGE

The United Nations Framework Convention on Climate Change (the Convention or UNFCCC) was adopted at the United Nations Headquarters, New York on the 9 May 1992.

The **United Nations Framework Convention on Climate Change** (UNFCCC) is the UN process for negotiating an agreement to limit dangerous climate change.

THE INTERGOVERNMENTAL PANEL ON CLIMATE CHANGE (IPCC)

Created in 1988 by the World Meteorological Organization (WMO) and the United Nations Environment Programme (UNEP), the objective of the IPCC is to provide

governments at all levels with scientific information that they can use to develop climate policies.

DEFENCE

MULTI-DAY AIR FORCE EXERCISE

The United States on Tuesday (January 27, 2026) announced a major multi-day Air Force exercise in West Asia

EXERCISE MILAN 2026

- India will host three major international maritime events in Feb 2026 at Visakhapatnam, namely, the International Fleet Review (IFR) 2026, Exercise MILAN 2026, and Indian Ocean Naval Symposium (IONS) Conclave of Chiefs, scheduled to be conducted from **15 to 25 Feb 2026**. This marks India's maiden conduct of these major maritime events simultaneously.
- **vision (Mutual and Holistic Advancement for Security and Growth Across Regions), announced in 2025**
- major participation from the United States, Russia, Japan, Australia, and ASEAN countries

SOUTH AFRICA-INITIATED MULTILATERAL NAVAL WARGAME

- South Africa-initiated multilateral naval wargame—Will for Peace 2026 is being held from **January 9–16, 2026**.
- The navies of China, Russia, Iran, Egypt, Indonesia, Saudi Arabia and the United Arab Emirates (UAE), among others, participated in the exercise that was held in South Africa.

- It was not a regular or institutionalised BRICS activity so India skips South Africa-led naval exercise
- The IBSAMAR (India-Brazil-South Africa Maritime) maritime exercise that brings together the navies of India, Brazil, and South Africa

PAKISTAN-UNITED STATES BILATERAL JOINT EXERCISE

The 13th Pakistan-United States bilateral joint exercise, 'Inspired Gambit-2026', commenced on Friday (January 9) at the National Counter Terrorism Centre (NCTC) in Pabbi town of Punjab's Kharian district

DESERT CYCLONE-II

The exercise DESERT CYCLONE-II concluded with a closing ceremony at Al-Hamra Training City, marking the successful culmination of intensive joint training between the Indian Army and the UAE Land Forces.

SPACE SCIENCE

WHY ARE SOME STARS BLUE, SOME WHITE, SOME RED?

The main reason is surface temperature.

- Stars behave roughly as objects that absorb all incoming radiation and radiate energy back based solely on their temperature.

- The colour we see depends on the wavelength of light where the star emits the most energy.
- Blue and blue-white stars have surface temperatures of 10,000 K or more. These are usually very massive stars with nuclear fusion happening at a furious rate.
- Yellower stars have surfaces at 5,200-7,500 K.
- orange and red stars' surfaces are up to 5,200 K hot. These are the coolest stars and emit most of their energy as infrared radiation.

AURORA ACTIVITY

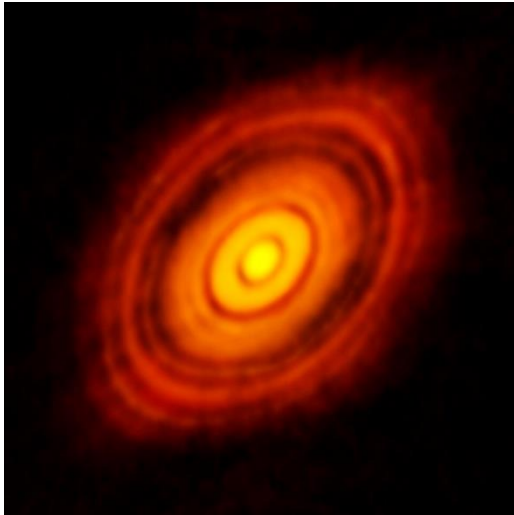


Aurora activity refers to the natural light displays (Northern/Southern Lights) caused by charged particles from the Sun (solar wind, CMEs) interacting with Earth's atmosphere, creating vibrant colors as gases like oxygen and nitrogen glow

SOLAR STORM

A **solar storm** is a disturbance on the Sun, which can emanate outward across the heliosphere, affecting the entire Solar System, including Earth and its magnetosphere, and is the cause of space weather

A PROTOPLANETARY DISK



A **protoplanetary disk** is a rotating circumstellar disc of dense gas and dust surrounding a young newly formed star.

NATIONAL BODIES

THE NATIONAL TIGER CONSERVATION AUTHORITY (NTCA)

the national tiger conservation authority (ntca) has been constituted under section 38 I (1) of wildlife (protection) act, 1972. further, as per the section 38 I, sub section 2 of the said act, the authority consists of the minister in charge of the ministry of environment and forests (as chairperson), the minister of state in the ministry of environment and forests (as vice-chairperson), three members of parliament, secretary, ministry of environment and forests and other members.

STATEMENTS

The United Nations has declared 2026 to be the ‘International Year for Rangelands and Pastoralists’.

CENTRAL SILK BOARD

Central Silk Board (CSB) is a Statutory body established in 1948 by an Act of Parliament.

It is working under the administrative control of Ministry of Textiles, Government of India.

SCHEME

ELIMINATE MALARIA

- National Framework for Malaria Elimination in India (2016-2030), India set an ambitious target to eliminate malaria (zero indigenous cases) by 2030
- According to the World Health Organization (WHO), a country is granted a certification of malaria elimination when “the chain of local transmission of all human malaria parasites has been interrupted nationwide for at least three consecutive years.
- 47 countries or territories have been officially certified malaria-free by the WHO.

'NATIONAL PROGRAMME ON ADVANCED CHEMISTRY CELL (ACC) BATTERY STORAGE

The Government approved the Production Linked Incentive (PLI) Scheme 'National Programme on Advanced Chemistry Cell (ACC) Battery Storage' for achieving manufacturing capacity of Fifty (50)

Giga Watt Hour (GWh) of ACC for enhancing India's Manufacturing Capabilities.

THE DANTEWADA "BAAL MITRA" PROGRAMME (EDUCATION FOCUSED - 2024/2025)

- Launched in 2024 by the Dantewada district administration in Chhattisgarh, this initiative aims to combat high school dropout rates and promote literacy, particularly in areas affected by conflict.
- Key Action: Establishes Baal Mitra Library-cum-Activity Centres (BLCACs) in all 169 gram panchayats to serve as safe, engaging, and welcoming learning spaces for children.

THE KERALA CLIMATE RESILIENT AGRI-VALUE CHAIN MODERNISATION (KERA) PROGRAMME

the Kerala government has announced financial assistance for cardamom replanting. The project will be implemented under the Kerala Climate Resilient Agri-Value Chain Modernisation (KERA) programme, a flagship initiative supported by the World Bank.

A "PRIME MINISTER RESEARCH CHAIR (PMRC)" SCHEME

A "Prime Minister Research Chair (PMRC)" scheme to attract top Indian-origin researchers and scientists is in the works, with a proposal to engage 120 research fellows and research chairs over five years.

AYUSHMAN BHARAT PM-JAY MUKHMANTRI SEHAT BIMA YOJANA

Ayushman Bharat PM-JAY Mukhmantri Sehat Bima Yojana (AB PM-JAY MMSBY), was launched on 20 August 2019 this is a flagship State Health Insurance Scheme for the beneficiaries of State of Punjab. AB PM-JAY MMSBY will provide financial protection to 65% population of state of Punjab. It is entitlement based cashless Health Insurance cover. Under this scheme cashless and paperless treatment is available at Government and empaneled Private hospitals.

AWARDS

THE INDIRA GANDHI PRIZE

- **Mozambican rights activist Graca Machel to be conferred with Indira Gandhi Peace Prize**
- The **Indira Gandhi Prize**, or the **Indira Gandhi Peace Prize**, also known as **Indira Gandhi Prize for Peace, Disarmament and Development**, is an annual award accorded by the Indira Gandhi Memorial Trust to individuals or organisations in recognition of creative efforts toward promoting international peace, development and a new international economic order.
- The prize carries a cash award of 2.5 million Indian rupees and a citation

UN SECRETARY GENERAL'S AWARD 2025

Major Swathi Shantha Kumar, has won the UN Secretary General's Award 2025 for her project Equal Partners, Lasting Peace.

MADHAV DHANANJAYA GADGIL

Madhav Dhananjaya Gadgil (24 May 1942 – 7 January 2026) was an Indian ecologist.

He was a onetime member of the Scientific Advisory Council to the Prime Minister of India and the Head of the Western Ghats Ecology Expert Panel (WGEEP) of 2010, popularly known as the Gadgil Commission.

Gadgil was a recipient of the Volvo Environment Prize and the Tyler Prize for Environmental Achievement. The Government of India awarded him the **fourth highest civilian award of the Padma Shri in 1981**

REPORT

NATURAL DISASTERS CAUSED SIGNIFICANT LOSSES WORLDWIDE IN 2025.

Natural disaster figures for 2025

- Costliest claims year to date regarding non-peak perils: Wildfires, flooding and severe thunderstorms account for almost all insured losses
- Insured losses once again above the US\$ 100bn mark; total global losses lower than the 10-year average
- Climate change does not let up: 2025 one of the warmest years ever

2025 UNICEF REPORT

According to a 2025 UNICEF report, nearly 188 million children and adolescents (1 in 10) worldwide are living with obesity, marking the first time this figure has surpassed the number of underweight children. Driven by high consumption of ultra-processed foods

WORLD MALARIA REPORT 2025

This year's report spotlights the growing threat of **antimalarial drug resistance**. Partial resistance to artemisinin derivatives – the backbone of malaria treatments after failures of chloroquine and sulfadoxine-pyrimethamine – has now been confirmed or suspected in at least 8 countries in Africa, and there are potential signs of declining efficacy of some of the drugs that are **combined with artemisinin**

THE WORLD METEOROLOGICAL ORGANIZATION (WMO) HAS CONFIRMED THAT 2025 WAS ONE OF THE THREE WARMEST YEARS ON RECORD

Geneva, Switzerland (WMO) – The World Meteorological Organization (WMO) has confirmed that 2025 was one of the three warmest years on record, continuing the streak of extraordinary global temperatures.

The year 2025 started and ended with a cooling La Niña and yet it was still one of the warmest years on record globally because of the accumulation of heat-trapping greenhouse gases in our atmosphere. High land and ocean temperatures helped fuel extreme weather

According to Advances in atmospheric science : that ocean temperatures were also among the highest on record in 2025, reflecting the long-term accumulation of heat within the climate system.

THE WORLD ECONOMIC FORUM'S GLOBAL RISKS REPORT 2026

Geoeconomic confrontation will be the single-biggest risk globally in 2026, overtaking State-based armed conflicts and extreme weather events, according to the World Economic Forum's Global Risks Report 2026. In India, the top risk is cybersecurity, followed by income and wealth inequality.

THE INTERNATIONAL LABOUR ORGANIZATION (ILO)'S EMPLOYMENT AND SOCIAL TRENDS 2026 REPORT

The International Labour Organization (ILO)'s Employment and Social Trends 2026 report, released on (January 14, 2026), has warned that the global unemployment rate is projected to remain at the historically low level of 4.9%

WORLD HEALTH ORGANIZATION (WHO) WARNED

WHO is calling on governments to significantly increase taxes on sugary drinks and alcohol, as two new reports reveal that levies remain low across many regions.

“Health taxes have been shown to reduce consumption of these harmful products, **helping to prevent disease and reduce the burden on health systems,**”

THE WORLD ECONOMIC FORUM'S YOUTH PULSE 2026

- Inequality top economic concern for youth globally: WEF survey

SPORTS

THE AUSTRALIAN OPEN

- The **Australian Open** (stylised **AO**) is a tennis tournament organised by Tennis Australia annually at Melbourne Park in Melbourne, Victoria, Australia. It is the first of the four Grand Slam tennis events every year.
- Venus Williams became the oldest player to play in the women's singles draw at age 45

THE INDIA OPEN



The **India Open** is an annual badminton event which has been held in India since 2008 and is a **BWF World Tour Super 750** international badminton tournament.

AWARDS

STATEMENT

- Chandrakant Lahariya, former staff member of World Health Organisation (WHO), has won the Wiley Research Heroes Prize 2025.

THE PADMA AWARDS

- Government announces 131 Padma awards for year 2026, including 5 Padma Vibhushan, 13 Padma Bhushan and 113 Padma Shri. Former Kerala Chief Minister V.S. Achuthanandan, actor Dharmendra, JMM founder Shibu Soren awarded Padma Vibhushan (posthumously). Playback singer Alka Yagnik, former Uttarakhand CM Bhagat Singh Koshyari, actor Mammooty and banker Uday Kotak awarded Padma Bhushan. Indian women's cricket team captain Harmanpreet Kaur awarded Padma Shri.
- **The Padma Awards**, one of the highest civilian honours of India, are announced every year on the eve of Republic Day. The Awards are given in three categories: Padma Vibhushan for exceptional and distinguished service; Padma Bhushan for distinguished service of higher order and Padma Shri for distinguished service in any field of activity.

MISCELLANEOUS

INTERNATIONAL DAY OF LIGHT

International Day of Light is celebrated on 16 May each year, on the anniversary of the first successful laser operation in 1960 by physicist and engineer, Theodore Maiman.

BIO-HAPPY DISTRICT

- keyi panyor in arunachal pradesh to become india's 1st bio-happy district
- the m.s. swaminathan n biohappiness, a concept coined agricultural scientist m.s. swaminathan
- *biohappiness: biodiversity and food, health and livelihood security.*

STATE MICROORGANISM

- Kerala became the first Indian state to officially declare a State Microorganism, designating *Bacillus subtilis* for this honor.
- Announced during the inauguration of the Centre of Excellence in Microbiome (CoEM) at Kinfra Park, the initiative aims to highlight the importance of beneficial microbes in agriculture, health, and environmental sustainability.

BENGALURU-KADAPA-VIJAYAWADA ECONOMIC CORRIDOR OF NH-544G

The National Highway Authority of India (NHAI) has successfully created four Guinness World Records on the under-implementation Bengaluru-Kadapa-Vijayawada Economic Corridor of NH-544G. On the 6th of this month, NHAI made two Guinness World Records near Puttaparthi in Andhra Pradesh.

βλγαρικος